

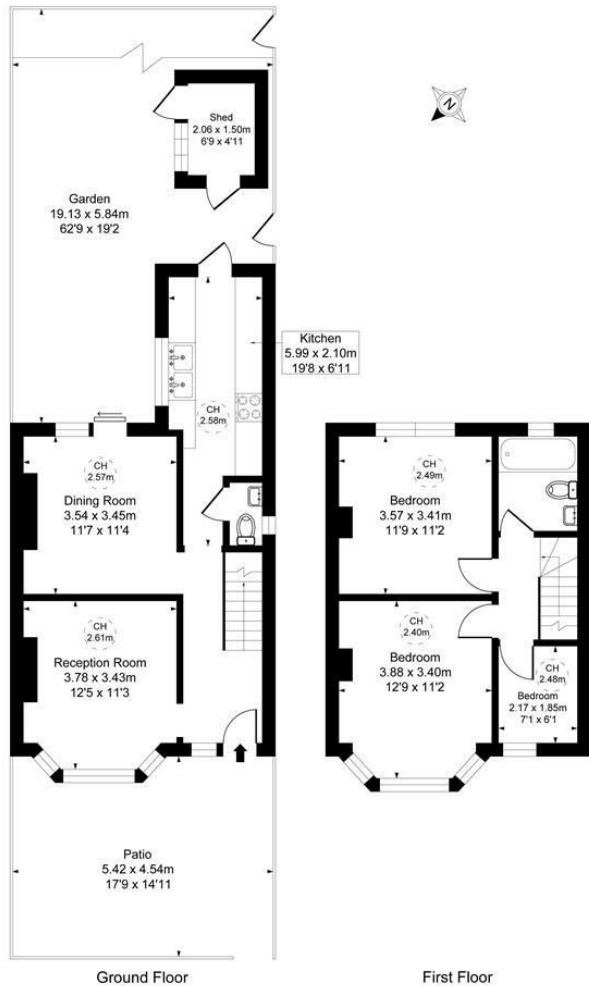
## Tennyson Avenue Motspur Park, KT3 6NA

£635,000 Freehold

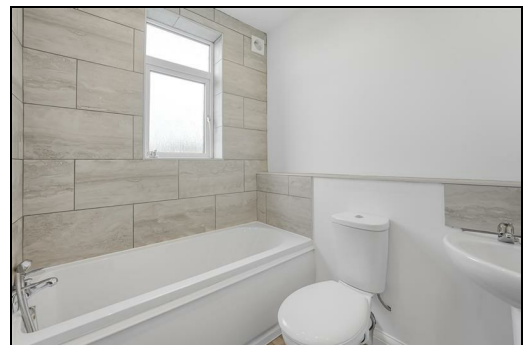


**This is a charming THREE BEDROOM, End Of Terrace 1930's house, that has a superb south facing garden with views over playing fields. Its perfectly located for Motspur Park Station, Shops and the green space of The Sir Joseph Hood Memorial Playing Fields (0.3 miles). An excellent and neutrally decorated first/second time purchase allowing an incoming buyer to move into and over time finish and extend s.t.p.p to their own desired tastes. Sold with no onward chain.**

Tennyson Avenue, Motspur Park  
 Approximate Gross Internal Area  
 84.63 sq m / 911 sq ft  
 (CH = Ceiling Heights)



This plan is not to scale. It is for guidance and not for valuation purposes.  
 All measurements and areas are approximate only, and have been prepared in accordance with the current edition of the RICS Code of Measuring Practice.



- Three Bedroom - End Of Terrace House
- South Facing Garden With Views Over Playing Fields
- 0.3 Miles To Motspur Park Station And Shops
- No Onward Chain
- Potential To Extend S.T.P.P
- Modern Kitchen And Bathroom
- Two Separate Reception Rooms
- Neutrally Decorated
- EPC - TBC
- Council Tax Band - D

Energy Efficiency Rating		Current	Possible
<small>Low energy efficient - lower running costs</small>			
(91-100)	A		
(81-90)	B		
(69-80)	C		
(55-68)	D		
(39-54)	E		
(21-38)	F		
(1-20)	G		
<small>High energy efficient - higher running costs</small>			
England & Wales		EU Directive 2002/91/EC	

For Free Mortgage Quote and Best Mortgage Rates, call Ellisons Mortgage Advisor on 0208 944 9595



Although these particulars are believed to be correct, their accuracy is not guaranteed and they do not form part of any contract.

Celebrating 30 years of successful Sales and Lettings in Merton

